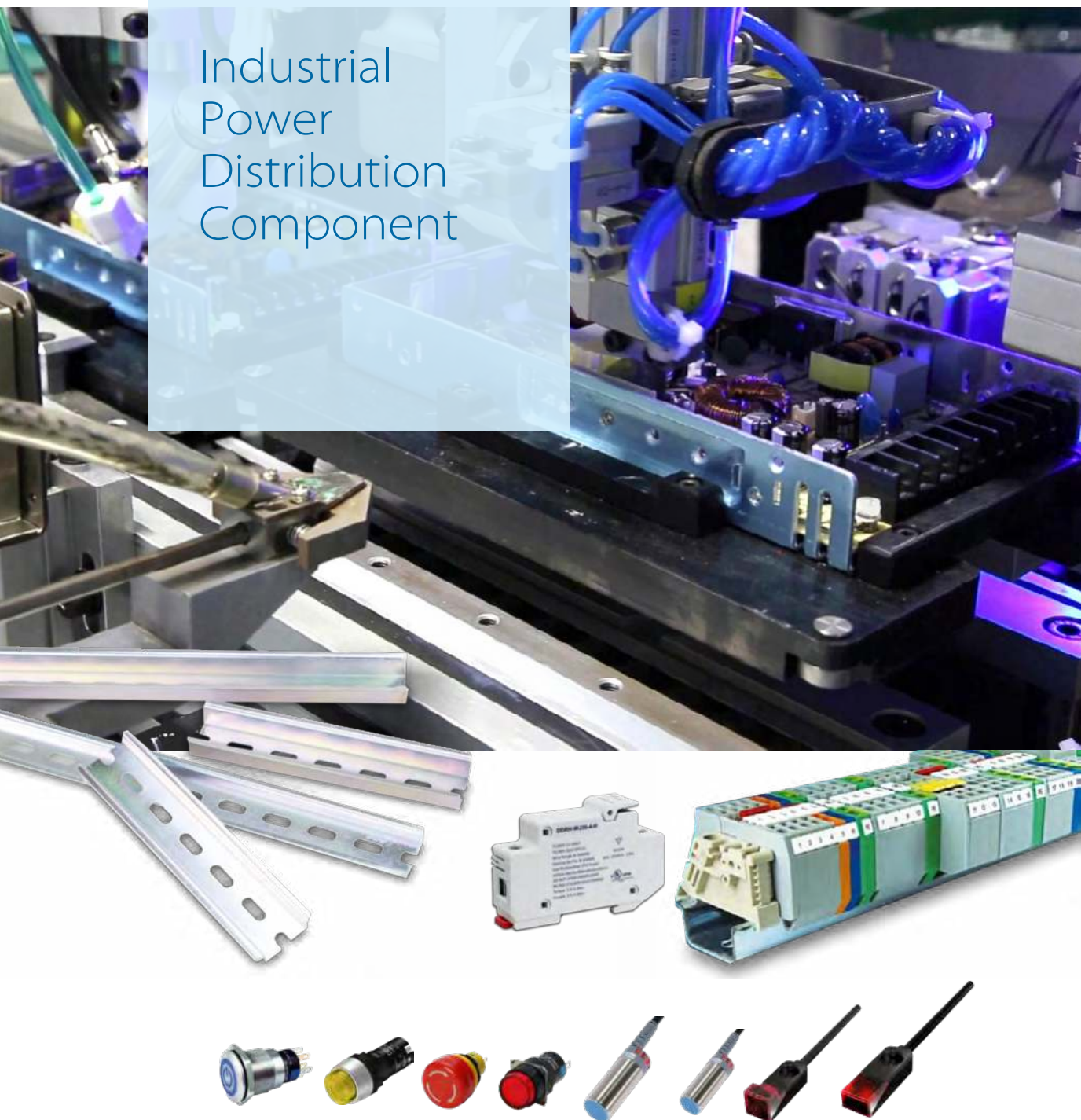


Industrial Power Distribution Component



DIN Rail T35 Zinc Plated Steel

The TS35mm DIN Rail is widely used as a standard bracket, which can quickly mounted the rail type terminal blocks, power supplies, circuit breakers, fuse holders, relays and industrial control components in control cabinets and distribution boxes. Vibration proof and anti-loosening due to high intensity connection.

Features

- Unique appearance design with environmental-friendly zinc plating and corrosion-resistant
- SPCC steel material that prevent distortion
- Precision by stamping process, no sharp edges for hand injury

Part No.	Photo	Applicable Models	Report
TS35/7.5-150		All DIN Rail type power supplies and DIN Rail terminals	
TS35/7.5-200			
TS35/7.5-300			
TS35C-7.5		End Cap for TS35-7.5 Series	
TS35/15-150		All DIN Rail type power supplies and DIN Rail terminals	
TS35/15-200			
TS35/15-300			
TS35C-15		End Cap for TS35-15 Series	

A

B

C

D

E

F

G

H

1

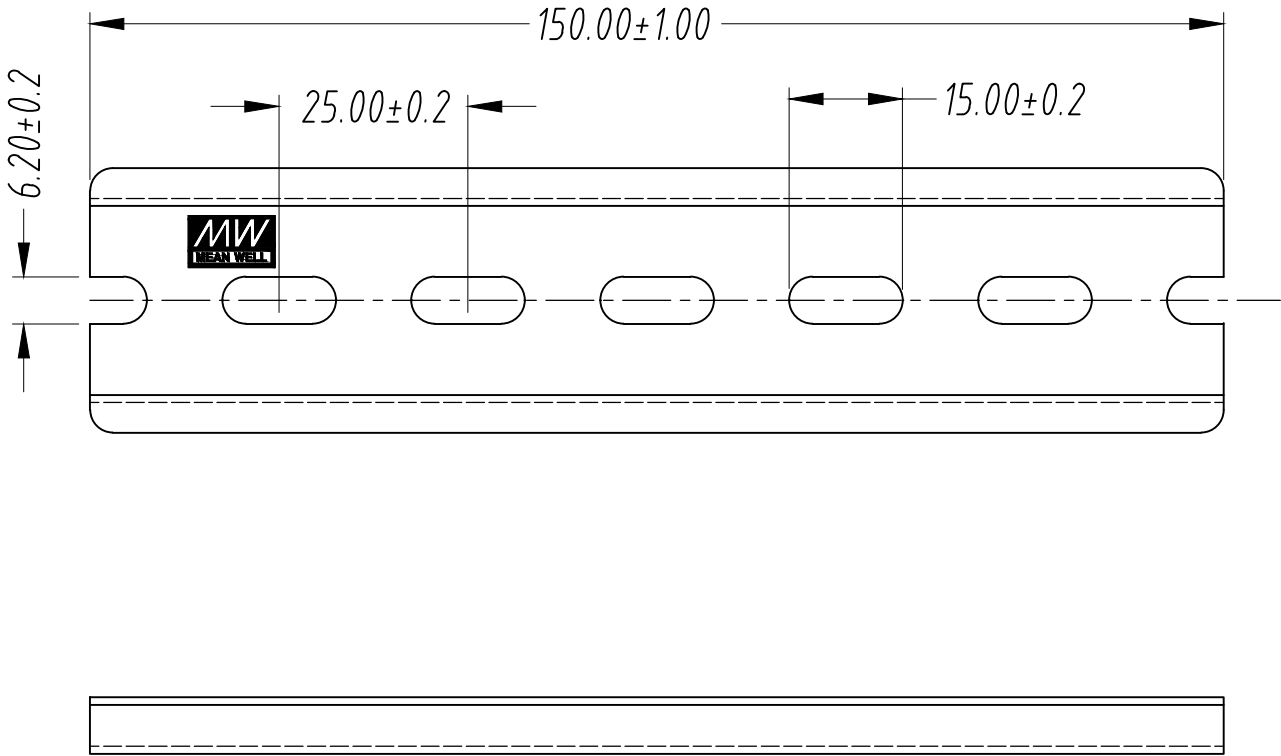
2

3

4

5

6



	MATERIAL: SPCC 材質: 冷軋板	DWG NAME: Mounting Accessories 圖號: TS35軌道條150×7.5	ORDER NO.: TS35 P/N:PGG2TS35-7.5-150
	FINISH: Yellow Zinc Plate 處理: 鍍五彩	THICKNESS: 1.0mm 厚度	DATE: 2023-03-09 日期
	UNIT: mm 單位	TOL.: Angle:±1° <6:±0.1mm 30 to 120:±0.3mm 公差 6 to 30:±0.2mm 120 to 315:±0.5mm	REV. R0 版本

A

B

C

D

E

F

G

H

1

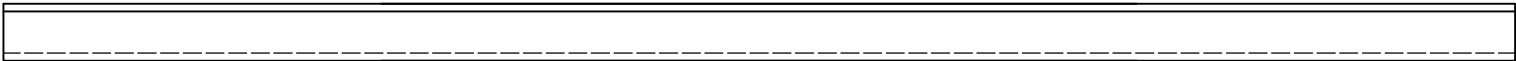
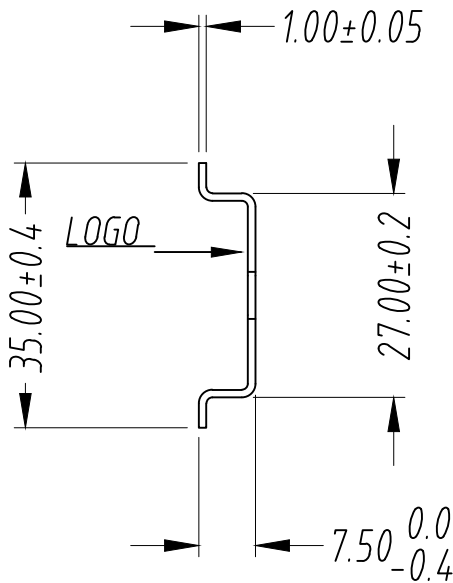
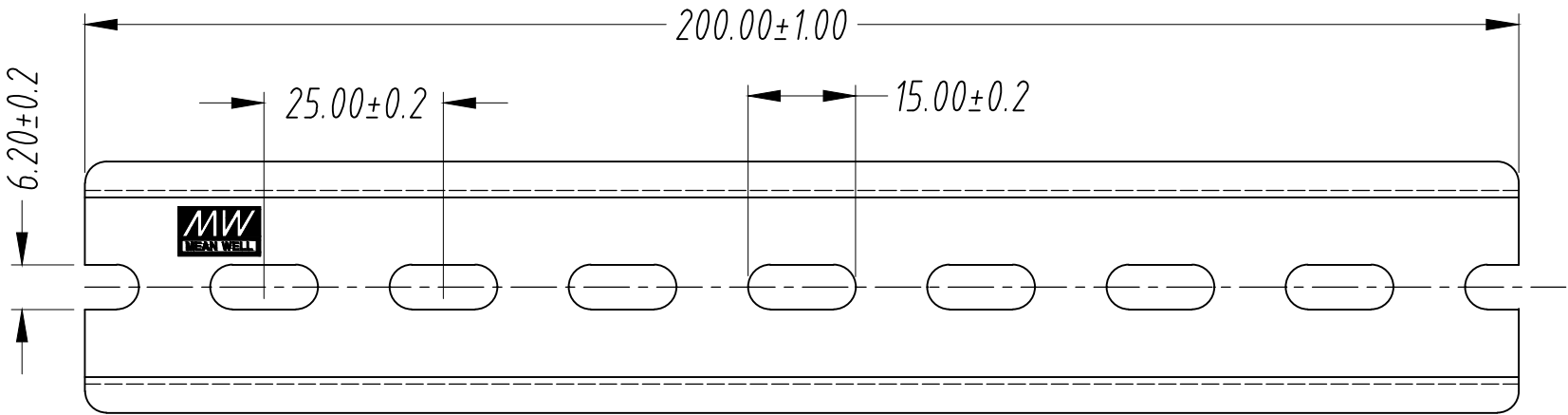
2

3

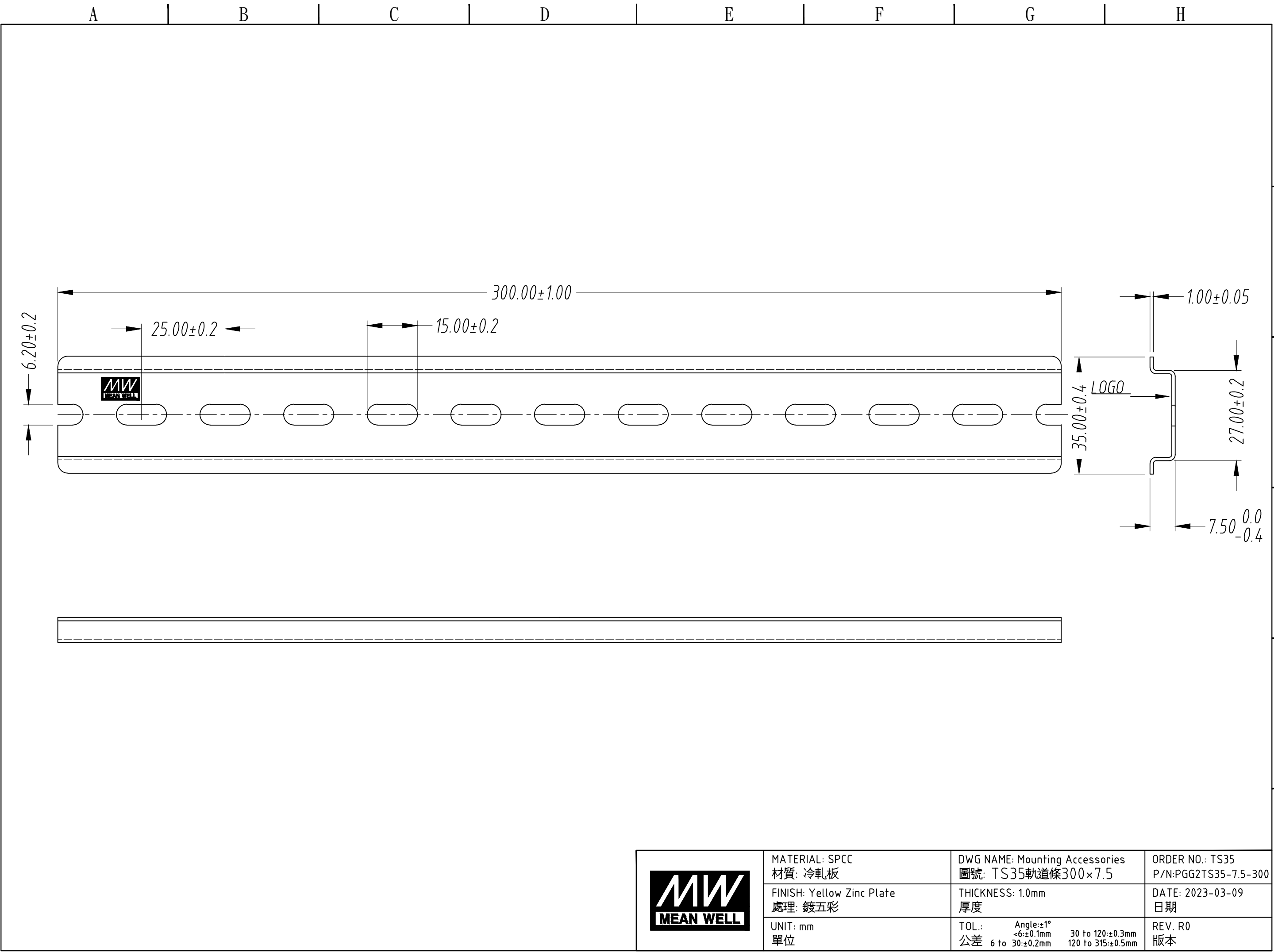
4

5

6



	MATERIAL: SPCC 材質: 冷軋板	DWG NAME: Mounting Accessories 圖號: TS35軌道條200×7.5	ORDER NO.: TS35 P/N: PGG2TS35-7.5-200
	FINISH: Yellow Zinc Plate 處理: 鍍五彩	THICKNESS: 1.0mm 厚度	DATE: 2023-03-09 日期
	UNIT: mm 單位	TOL.: Angle: ±1° <6: ±0.1mm 30 to 120: ±0.3mm 公差 6 to 30: ±0.2mm 120 to 315: ±0.5mm	REV. R0 版本



A

B

C

D

E

F

G

H

1

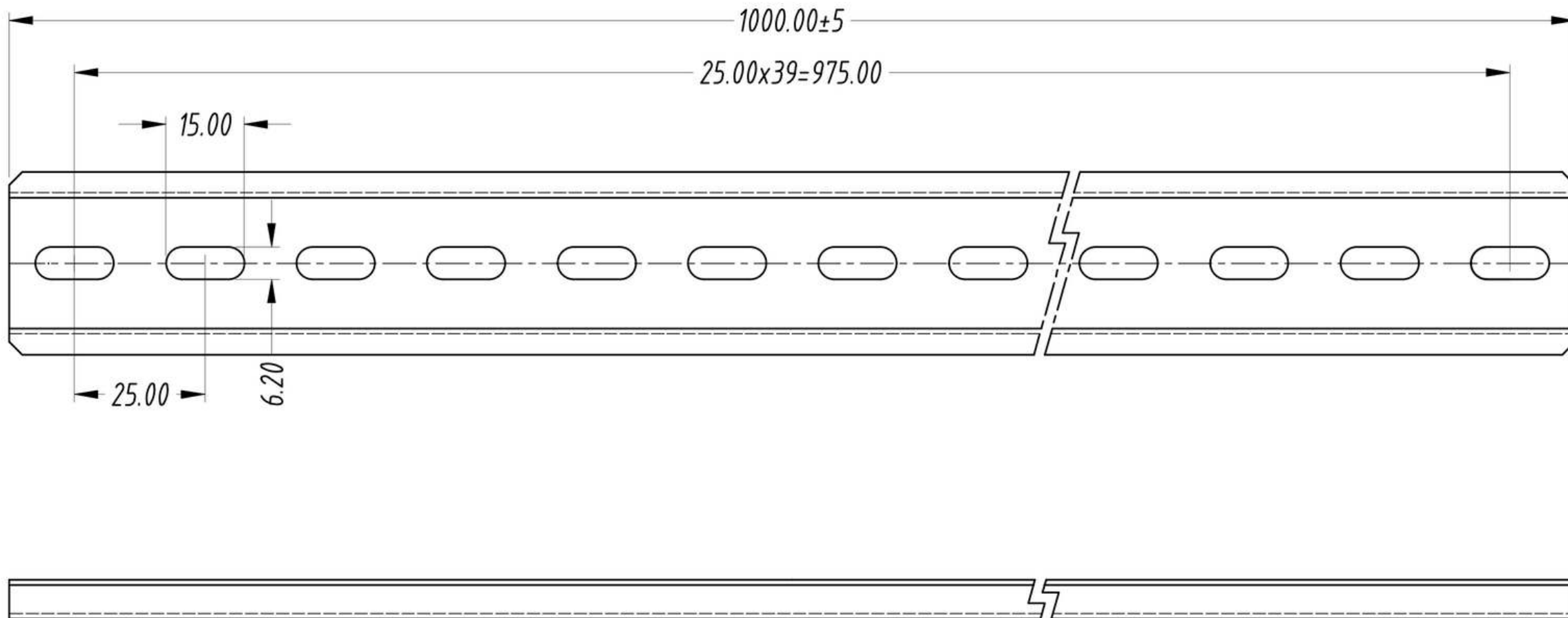
2

3

4

5

6



	MATERIAL: SPCC 材質: 冷轧板	DWG NAME: Mounting Accessories 圖號: TS35軌道條1000×7.5	ORDER NO.: TS35 P/N:PGG2TS35-7.5-1000
	FINISH: Yellow Zinc Plate 處理: 鍍五彩	THICKNESS: 1.0mm 厚度	DATE: 2024-08-30 日期
	UNIT: mm 單位	TOL.: Angle:±1° 公差 6 to 30:±0.1mm 30 to 120:±0.3mm 120 to 315:±0.5mm	REV. R0 版本