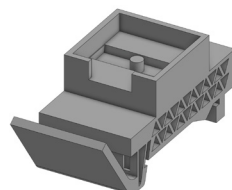


**Power Source AC Terminal Covers** are developed as a safety accessory designed to prevent accidental contact with live AC terminals on MEAN WELL DIN Rail power supplies.

The expanding range is precisely designed to fit each MEAN WELL series, made of tough non-conductive material and easy to install with a screwdriver.

Part number & Wattage	NDR				SDR					EDR		XDR	WDR				TDR			DRC				
	75W	120W	240W	480W	75W	120W	240W	480W	960W	75W	120W	240W	60W	120W	240W	480W	240W	480W	960W	40W	60W	100W	180A	180B
ACC-DR-75	✓				✓					✓			✓											
ACC-DR-120		✓				✓					✓			✓										
ACC-DR-240A			✓																					
ACC-DR-240B							✓																✓	✓
ACC-DR-240T																	✓							
ACC-DR-240X											✓													
ACC-DR-480A				✓				✓																
ACC-DR-480J																		✓						
ACC-DR-960B									✓															
ACC-DR-960J									✓										✓					

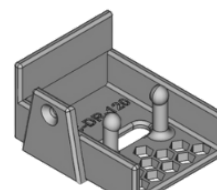
Part number & Wattage	D1-10
ACC-DR-D1-10	Din rail bracket for 1-10Vdimmer



ACC-DR-D1-10



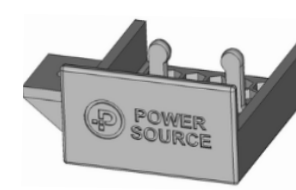
ACC-DR-75



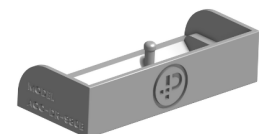
ACC-DR-120



ACC-DR-240A



ACC-DR-480A



ACC-DR-960B